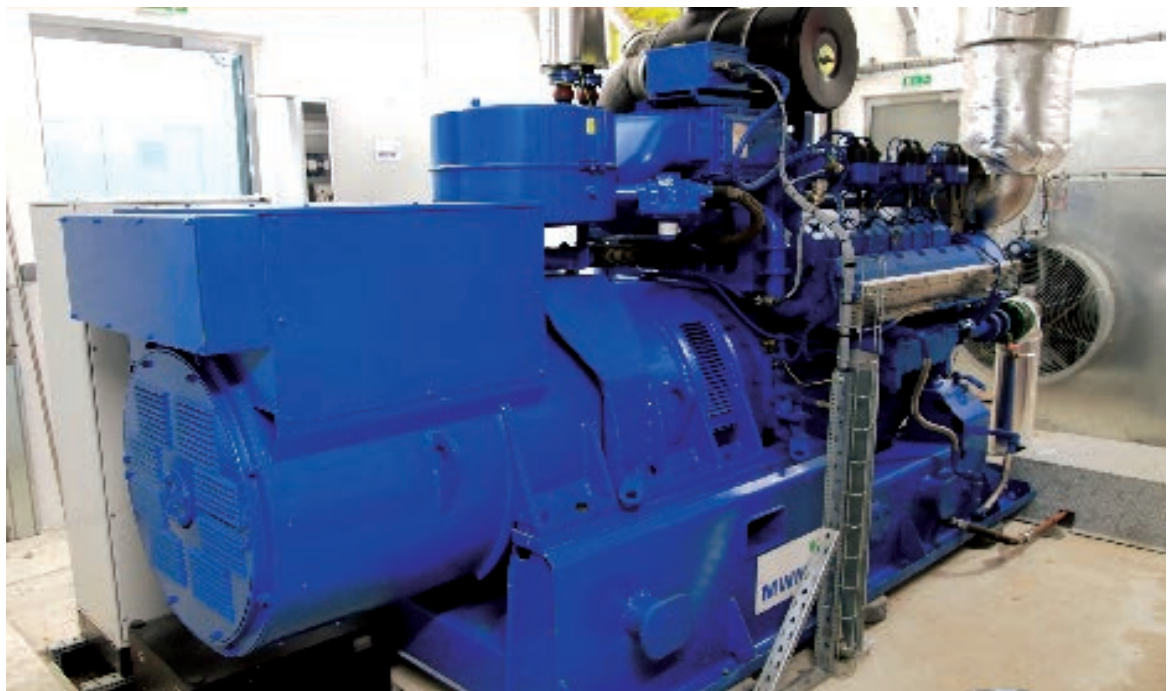




biogaz application



THE CASE

Biogas power plant - FRANCE

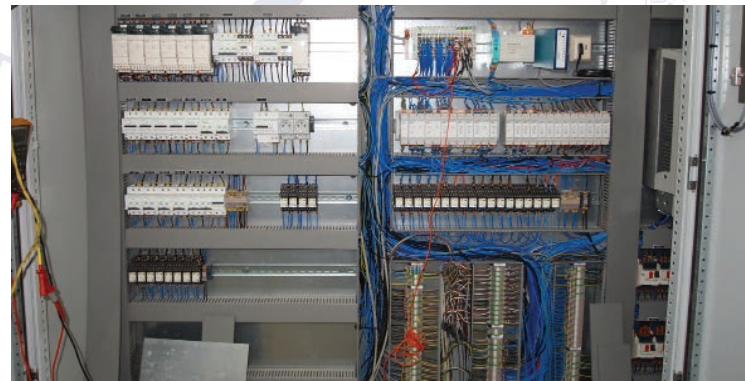
- Biogas plant is the GAEC VDLV 590kVA facility dedicated to energy production using only animal biological wastes. This facility is subject to a specific contract with the company ERDF (French company in charge of the national grid management).
- The generator is installed in permanent paralleling mode and the plant includes a very sophisticated adaptation of the active and reactive power management; control of these power levels, a long-term secured data archiving and management of auxiliaries.



OUR SOLUTION

CRE technology provides GENSYS 2.0 with CANopen expansion module with 32 digital outputs, 32 digital inputs, 4 analog inputs and 4 outputs for processing signals 4-20mA and 0-20mA.

In addition to the equipment CRE technology also provides technical expertise and is involved in the development of the project through its engineering application service



PRODUCTS INSTALLED

- 1 GENSYS 2.0 in permanent paralleling mode
- Additional remote CANopen inputs/outputs slots.(analog and digital).
- 8Go SD Card

The GENSYS 2.0 manage the following features:

- Synchronization of the generator by contact outputs
- Management of active power set point and power factor based on the acquisition of biogas quality, power quality and production demand.
- Control of auxiliaries.
- Data sharing with engine controller through Modbus communication and analog signals.
- Management of electrical protections.
- Manual mode
- Secured archiving via SD card for a period of 15 years

FOCUS ON

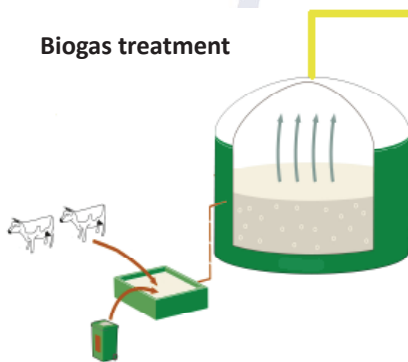
8GB SD card storage:

For this installation the customer required a secured archiving system for a 15 years long data recording on biogas and ERDF network power.

CRE technology has used the SD card storage and a dedicated password protected program using GENSYS 2.0 internal automation functions.



Biogas treatment



Power management & mains paralleling

